

Untitled Map

Write a description for your map.

Legend



General Scope of Work to be Performed:

1. **TEAR OFF all shingles and underlayment.**
2. **Install Ice and water guard Accordingly**
3. **All underlayment and shingles are to be NAILED.**
4. **Install Roofing of Choice (choice of color).**
5. **Properly protect all landscaping.**
6. **Secure required permits from the proper building authority.**
7. **Clean up and properly dispose of all job-related debris.**
- 8.
- 9.
- 10.
- 11.
- 12.
- 13.

Permits: (if applicable)

All applicable permits & inspection fees pertaining to job will be applied for & obtained by Precision Roofing Services for the scope of work being performed in their respective township, city or village. Permits for roofing projects are a requirement in certain townships or municipalities by local building codes.

After Precision Roofing Services completes the professional installation of your new roof, and the project is inspected if required and approved by the manufacturer, you will have a beautiful new roof that is protected by a 100% full replacement warranty that covers all materials & labor. But more importantly, you will have the “**Peace of Mind**” in knowing that you hired the right contractor, the “**Peace of Mind**” that you picked the right project and the “**Peace of Mind**” that this is the last roof you ever have to buy!

Long Term Warranty:

SHINGLES:

Precision Roofing Services is a Professional Roofing Contractor certified by CertainTeed as a “**Select Shingle Roofer**”. Precision Roofing Services proposes to furnish and install labor and material in accordance with the above specifications in order to qualify for the Manufacturers SureStart *PLUS 5 Star* Warranty. This warranty provides full replacement of a defective roof to include **all labor, materials, cleanup and disposal** for removal and reapplication with **NO PRORATE for the first 50 years. (Workmanship is covered for LIFETIME)**. This also includes a **10 year Streak Fighter** and a **15 year Wind Warranty up to 110 mph**. The remaining years will be prorated for material replacement only. This warranty is transferable to a subsequent owner within the first 20 years, and can only be offered by a certified **CertainTeed Select Shingle Roofer**. This truly makes your roofing investment a worry free guarantee that you won't have to make this kind of purchase again.

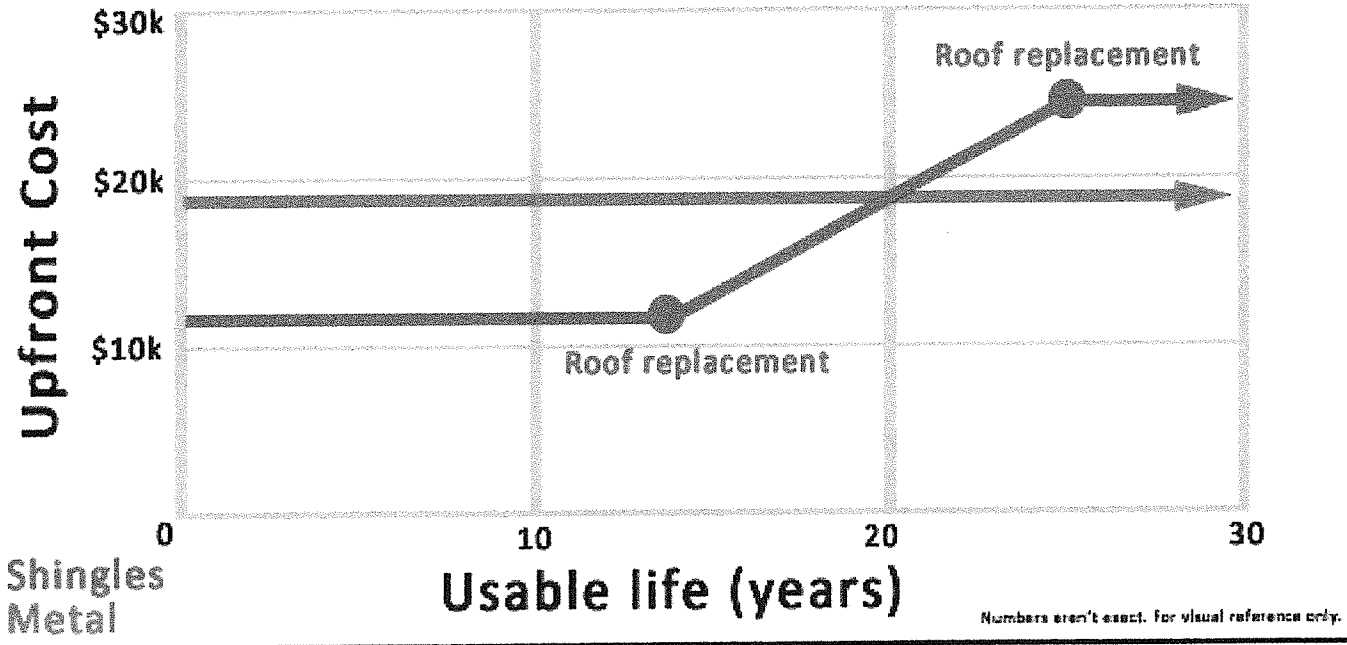
Standing Seam Roofs

Precision Roofing Services proposes to furnish and install labor and material in accordance with the above specifications in order to qualify for the Limited Lifetime Warranty. This warranty provides full replacement of a defective roof to include **all labor, and materials** for correcting covered roof panels. **NO PRORATE for the first 35 years**. The remaining years will be prorated for material replacement only. This truly makes your roofing investment a worry-free guarantee that you won't have to make this kind of purchase again.

MatterHorn Metal Roofs

Precision Roofing Services proposes to furnish and install labor and material in accordance with the above specifications in order to qualify for the Manufacturer's Warranty. This warranty provides full replacement of a defective roof to include **all labor, and materials** for removal and reapplication with **NO PRORATE for the LIFETIME of the original purchaser**. This warranty is transferable to a subsequent owner.) (Transferred warranties will remain non-prorated for the first 10 years and is reduced to 50% for years 11-30. Precision Roofing Services offers a 25-year workmanship guarantee. This truly makes your roofing investment a worry-free guarantee that you won't have to make this kind of purchase again.

Asphalt shingles vs. metal roofing cost over time



Total Investment product comparison over first 15 years

	Asphalt Roofing	Metal Roofing	Insulated / Ventilated Metal Roofing	
Initial Investment	\$7,000	\$12,200	\$21,000	
Maintenance cost (1-5)	\$900	\$0	\$0	Shoveling / Repairs (15% of energy bills)
Cost Savings (1-5)	\$0	\$0	\$1,350	
Maintenance cost (6-10)	\$1,200	\$0	\$0	Shoveling / Repairs (15% of energy bills)
Cost Savings (6-10)	\$0	\$0	\$1,485	
Maintenance cost (11-15)	\$9,000	\$0	\$0	Shoveling / New Roof Needed (15% of energy bills)
Cost Savings (11-15)	\$0	\$0	\$1,634	
Maintenance cost (16-20)	\$1,200	\$0	\$0	Shoveling / Repairs (15% of energy bills)
Cost Savings (16-20)	\$0	\$0	\$1,797	
Maintenance cost (21-25)	\$1,700	\$0	\$0	Shoveling / Repairs (15% of energy bills)
Cost Savings (21-25)	\$0	\$0	\$1,977	
Maintenance cost (26-30)	\$9,000	\$0	\$0	Shoveling / New Roof Needed (15% of energy bills)
Cost Savings (26-30)	\$0	\$0	\$2,174	
Total Spent over 30 Years	\$60,000	\$12,200	\$10,584	
Total Per Year on Roofing	\$1,000	\$406.67	\$352.80	
Recommendation	Makes Most Sense Years 1-6	Makes Most Sense Years 6-18	Makes Most Sense Years 18+	

15% cost savings based on energy usage of a 2000 Sq. Ft. home in the U.S. without roofing innovation.

Single Repair Winter roof shoveling \$250 / year

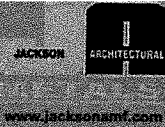
With Asphalt, the average Michigan Homeowner Re-Roofs every 13 years.

Electricity and gas bill reductions of \$270 / year

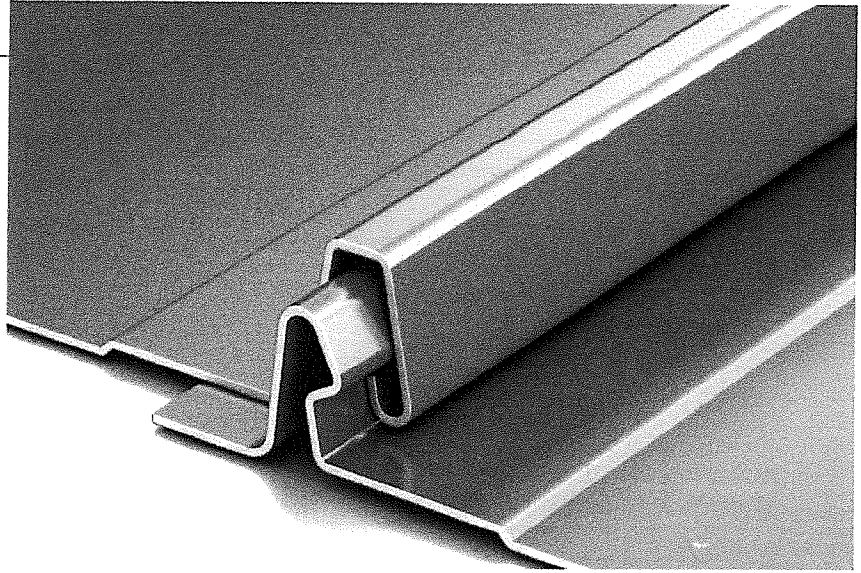
Cost of energy is increasing by 10% per year so saving dollars!

THIS PROPOSAL MAY QUALIFY FOR THE SALES COST SAVINGS PLAN

DMC 100NS Profile

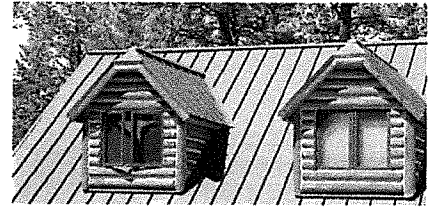


Our DMC 100NS profile offers unlimited design potential with its sleek, crisp appearance and attractive shadow lines. Eliminating the need for metal roof clips, the concealed 1" self-locking Snap Lock system creates a powerfully protective seal. Versatile and refined, this easy-to-install metal roof delivers superior beauty, durability and strength while showcasing architectural details.



Ideal Application:

Residential

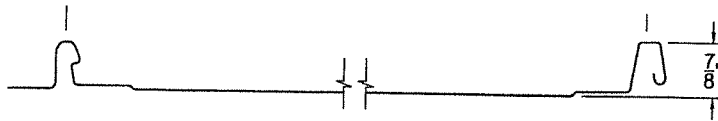


DMC 100NS Profile

Available widths:

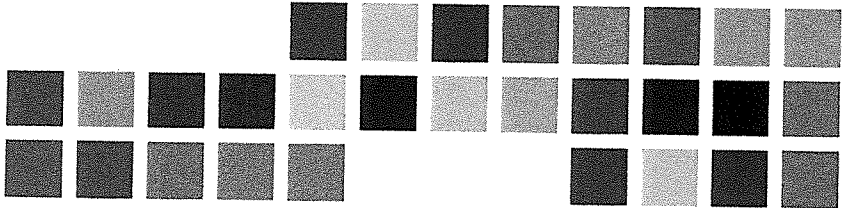
16"

*Drexel Metals design pressures, wind uplifts and test reports are for specific deck attachments, material gauges, clip spacing and panel widths. A complete specification and listing is available online at www.drexelmetals.com



Substrates available:

- Galvalume® – 24ga and 26ga
- Drexlume® – 24ga
- Aluminum – .032"



Finishes and product warranty:

Available in a variety of coatings and colors by AkzoNobel. See the Drexel Metals color card for standard colors and paint specifications.



Galvalume® Substrate:
High-performance painted metal roofing product, carefully tensioned leveled for superior flatness.

35 YEAR WARRANTY

35-Year Non Pro-rated PVDF Paint Warranty

Aluminum Substrate:
High-performance painted metal roofing product, carefully tensioned leveled for superior flatness.

35 YEAR WARRANTY

35-Year Non Pro-rated PVDF Paint Warranty

Drexlume® Substrate:
Mill finished Galvalume® with a two-sided, clear acrylic finish.

25 YEAR WARRANTY

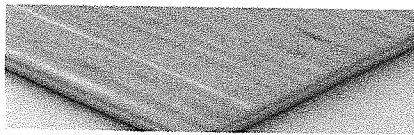
25-Year Non Pro-rated Drexlume Warranty (Acrylic Coated Galvalume)

Production options:

Factory made or field rolled to exact lengths
Optional: striation, beads, pencil ribs

Installation:

Can be installed over plywood decking and Drexel Metals MetShield® underlayment.



Slope:

Minimum slope 3:12



Minimum Roof Pitch:
3:12 – low roof pitch

Testing:

In accordance with:



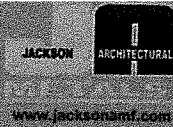
- UL 580 Wind Uplift (Class 90)
- UL 2218 Class 4 Hail Impact
- UL 263 Fire Certification
- UL 790 Class A Fire Rating
- UL Environmental – SRI Third-Party Verified
- Florida Building Code Approved



1421 S. Cooper St., Jackson, MI 49203
517-782-8884 phone • 517-782-8906 fax
info@jacksonamf.com



DMC 150SS Profile



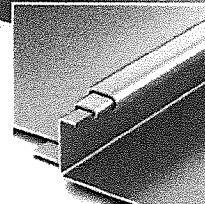
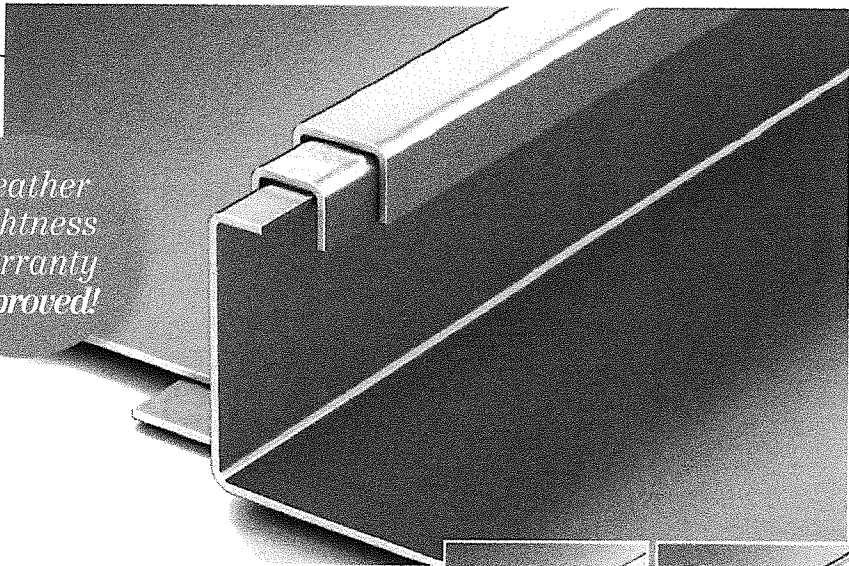
Our DMC 150SS roof system will lend striking dimension to any architectural design. This versatile 1-1/2" mechanically seamed panel can be curved to a wide range of radiuses and applications – from barrel roofs to conical shapes and more. Concealed fasteners and a floating clip system reduce the effect of thermal stresses on the panels, helping to maintain a beautifully smooth, uniform appearance despite fluctuations in temperature.

*Weather
Tightness
Warranty
Approved!*

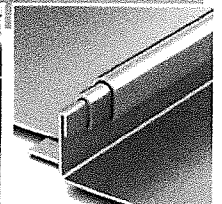
Ideal Application:

Commercial

Residential



Single lock panel



Double lock panel



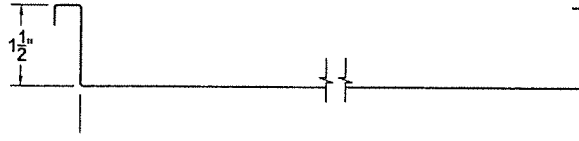
DMC 150SS Profile



Available widths:

12", 14", 16", 18", 19" or 20"

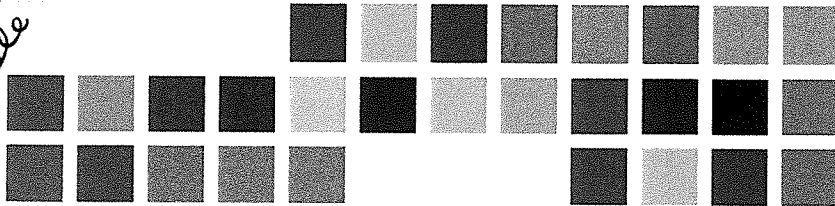
*Drexel Metals design pressures, wind uplifts and test reports are for specific deck attachments, material gauges, clip spacing and panel widths. A complete specification and listing is available online at www.drexelmetals.com



Substrates available:

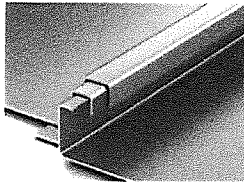
- Galvalume® – 24ga and 26ga
- Drexlume® – 24ga and 26ga
- Aluminum – .032"
- Copper – 16 oz and lead-coated copper
- Falzinc

Color Matchsheet as much as possible

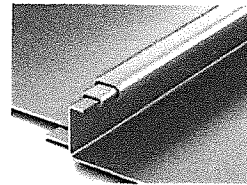


Profile Options:

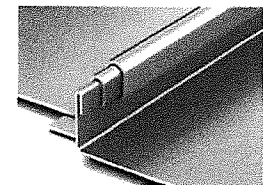
- Single lock panel
- Double lock panel
- Radius panel (single or double lock)



Unseamed panel



Single lock panel



Double lock panel

Finishes and product warranty:

Available in a variety of coatings and colors by AkzoNobel. See the Drexel Metals color card for standard colors and paint specifications.



Galvalume® Substrate:
High-performance painted metal roofing product, carefully tensioned leveled for superior flatness.

35 YEAR WARRANTY
35-Year Non Pro-rated PVDF Paint Warranty

Aluminum Substrate:
High-performance painted metal roofing product, carefully tensioned leveled for superior flatness.

35 YEAR WARRANTY
35-Year Non Pro-rated PVDF Paint Warranty

Drexlume® Substrate:
Mill finished Galvalume® with a two-sided, clear acrylic finish.

25 YEAR WARRANTY
25-Year Non Pro-rated Drexlume Warranty (Acrylic Coated Galvalume)

Production options:

Factory made or field rolled to exact lengths
Optional: striation, beads, pencil ribs

Installation:

Can be installed over steel decking with PolyIso, or over plywood decking and Drexel Metals MetShield® underlayment.



Slope:

Minimum slope 2:12



Minimum Roof Pitch:
2:12 – low roof pitch

Testing:

In accordance with:



- UL 580 Wind Uplift (Class 90)
- TAS 125 Wind Uplift
- UL 1897 Extended Phase Wind Uplift
- UL 2218 Class 4 Hail Impact
- UL 790 Class A Fire Rating
- UL Environmental – SRI Third Party Verified
- ASTM E1646 Water Infiltration
- TAS 100 Wind Driven Rain
- ASTM E1680 Air Infiltration
- ASTM E1886 Missile Impact
- ASTM 2140 Static Pressure Water Head
- Miami-Dade County Approved
- Florida Building Code Approved
- Texas Department of Insurance Approval



1421 S. Cooper St., Jackson, MI 49203
517-782-8884 phone • 517-782-8906 fax
info@jacksonamf.com

